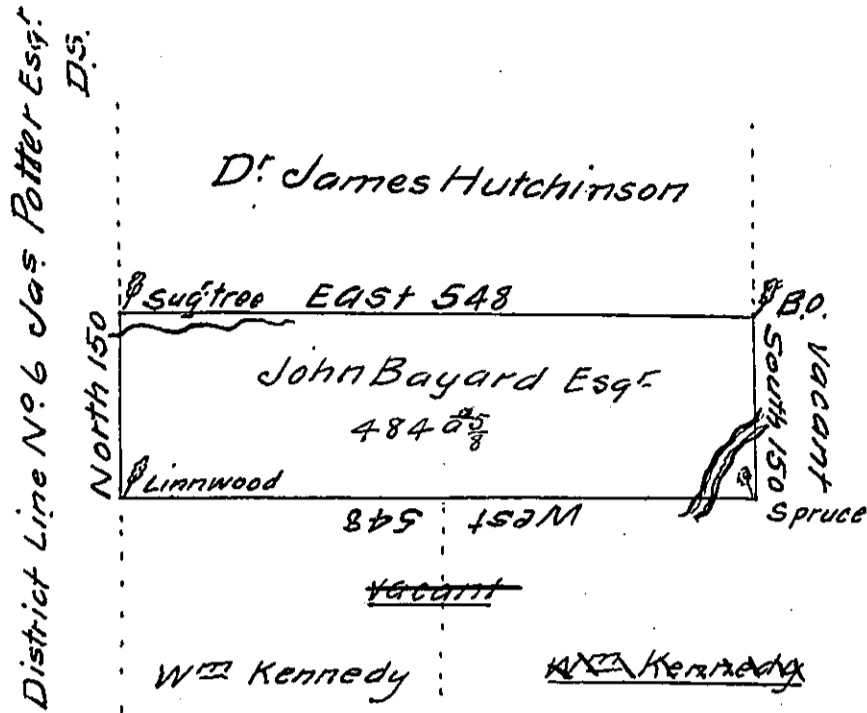


436



A Draught of a tract of Land situate on the Waters of Stump-Creek or Punk-suctaning adjoining the line of District No. 6 near the 20th mile tree north of the West Branch of Susquehanna in the County of Northumberland containing Four hundred and eighty four acres and allowance of six acres percent. Surveyed the 28th day of July 1785 for John Bayard Esquire in pursuance of a warrant N^o 436 dated the 17th day of May 1785
p. Richard Sherer D.S.

John Lukens Esquire
Surveyor General

IN TESTIMONY that the above is a copy of the original remaining on file in the Department of Internal Affairs of Pennsylvania, made conformably to an Act of Assembly approved the 16th day of February, 1833, I have hereunto set my Hand and caused the Seal of said Department to be affixed at Harrisburg, this eightth day of August 1911

Henry Hoitch,
Secretary of Internal Affairs.